

SAMSUNG

Messenger[®] Touch

Make friends with flair

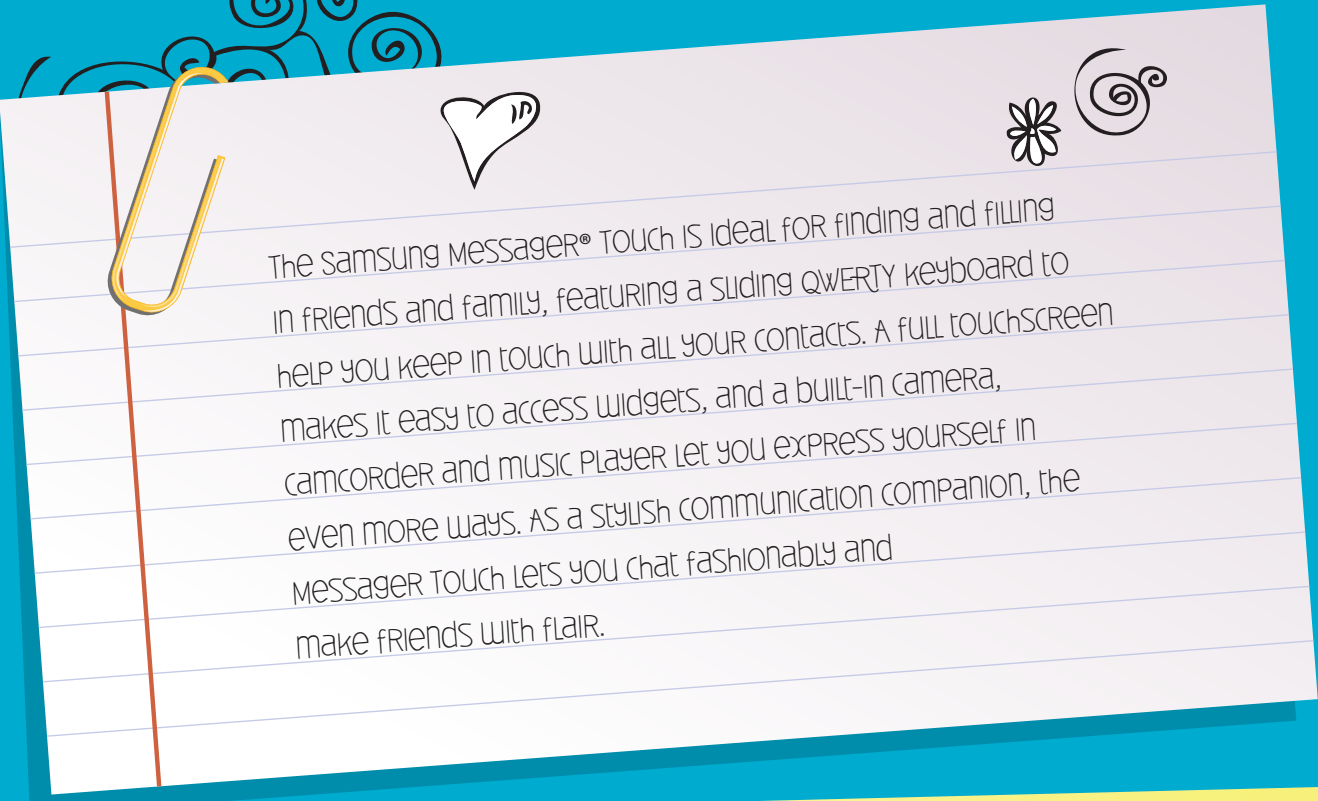


TTYL

LOL



L8R



The Samsung Messenger® Touch is ideal for finding and filling in friends and family, featuring a sliding QWERTY keyboard to help you keep in touch with all your contacts. A full touchscreen makes it easy to access widgets, and a built-in camera, camcorder and music player let you express yourself in even more ways. As a stylish communication companion, the Messenger Touch lets you chat fashionably and make friends with flair.

Who Gets the Message About Messenger Touch?

Anyone looking for a stylish combination of a full touchscreen and the convenience of a full keyboard will appreciate the fast widget access and quick messaging capabilities of the Messenger Touch.

Full Touchscreen and Sliding QWERTY Keyboard

Swipe, flick and tap your way to tons of features or slide out the keyboard to type out messages in style.

Preloaded Widgets

Lots of preloaded widgets give you fast ways to organize your life and access popular social networking sites.

2.0 Megapixel Camera

Get flashy and seize momentous occasions with friends by capturing photos to send to your friends and family.

Music Player with microSD™ Memory Support

Amp up your musical aptitude with a built-in music player supported by an optional microSD™ memory card.

Easy to Use Interface

Find your way around easily with an intuitive user interface that makes it simple to find what you're looking for.



Mastering the TOUCH:



Understanding Your Display Screen

1. The top line of your phone's display contains icons that indicate network status, battery power, signal strength, connection type and more.
2. Tapping the gear shaped icon at the top left of your screen opens the Widget Tray that lists available widgets.
3. The center portion of the display shows widgets and information such as call progress information, messages and photos.
4. The bottom line of the display shows available soft keys. The default configuration includes:
 - **Dialer** — Launches the Dialer screen that lets you place calls
 - **Contacts** — Launches the Contacts list screen
 - **Shortcuts** — Launches the Shortcuts list screen
 - **Menu** — Launches the Main Menu1
5. Three virtual lamps in the second line of the display indicate which Home screen is currently showing.

Menus to Choose: Menu Navigation

The Messenger Touch offers two Main Menus, each offering distinct features and options.

To access your phone's menus in **Standby** mode, tap the **Menu** soft key. Main **Menu1** appears in the display. To view Main **Menu2**, tap the **Menu2** tab at the bottom of the screen. To access a feature or submenu named in the display, select the appropriate icon.

Get a Taste of Type: Creating and sending Text Messages

The full, sliding QWERTY keyboard of the Messenger Touch allows you to tap out texts with lightning speed. (Note that the touchscreen does not include a virtual keyboard.)

In **Standby** mode, tap **Menu**, then **Messaging**. Select **New Message**, then **Text Message**. The **New Txt Msg** screen appears in the display. Slide the QWERTY keypad open.

Tap **Add**, then select from **Contacts / Recent Calls / Groups** to find and select a recipient for this message. (You may also enter a recipient's number or email address at the previous screen by tapping **New #**.)

Tap the **Text** field and enter the text content of your message using the keypad. Once you're finished entering your message, press **Send**.

ttyl



Get Flashy in a Snap: Taking Pictures and Videos

The built-in camera and camcorder allow you to take pictures and capture video with the push of a button. Access your camera and camcorder by pressing the **Camera** key on the lower right side of the handset.

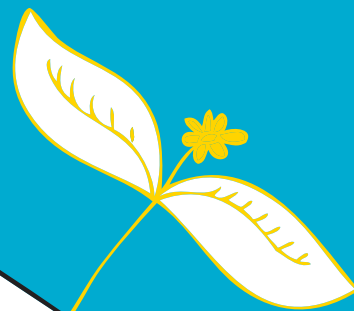
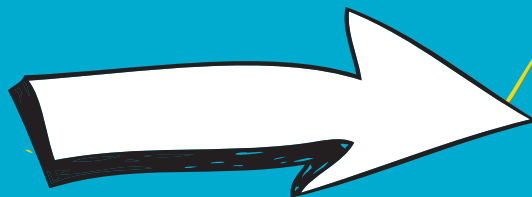
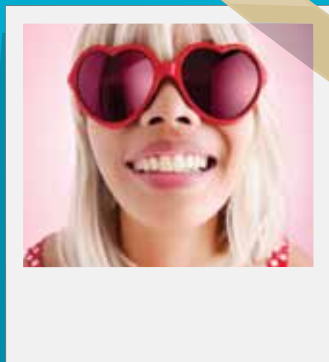
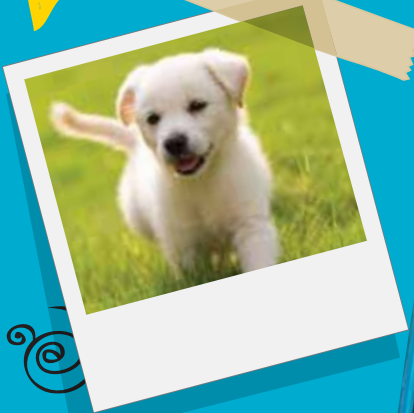
When you press the **Camera** key, the handset will automatically be in Camera mode. To toggle between Camera and Camcorder modes, press the **Mode** icon.

Using the camera to Take Single-Pictures

To take a single picture in **Standby** mode, press the **Camera** key. The camera viewfinder screen appears in the display. If the **Shooting Mode** icon is not displayed press **Shooting Mode**, then select **Single**. Using the display as a viewfinder, point the camera at your subject and press the **Camera** key.

YOUR PHONE NOW ALLOWS YOU TO DO ONE OF THE FOLLOWING:

- Press **Send via** to send a copy of the photo in a picture message to your addressee(s), to your online album or over a Bluetooth® connection.
- Press **Set As** to assign the photo as a Home screen wallpaper or as a Contact ID image.
- Press **Erase** to erase the photo.
- Press **Save** to save the photo to the Pictures folder.



ARRange and PLay: Widgets

The Messenger Touch allows you to select which widgets appear in your Widget Tray.

SELECTING PRELOADED WIDGETS

To select which preloaded widgets appear, visit the **Settings** menu and select **Widgets**. The following widgets are already included in your phone:

- ✿ Facebook® *
- ✿ Twitter™ *
- ✿ send Message
- ✿ TOP 5 contacts
- ✿ Images
- ✿ CALCULATOR
- ✿ CLOCK
- ✿ calendar
- ✿ Date
- ✿ ALARM CLOCK
- ✿ BLUETOOTH®
- ✿ TUTORIAL

FAST APP ACCESS: USING THE WIDGET TRAY

The Widget Tray contains icons that you can tap in order to place the corresponding widget onto one of the three Home screens.

In **Standby** mode, select one of the three Home screens by swiping your finger horizontally across the display. Open the Widget Tray by tapping the Widget Tray icon in the upper left corner of the Home screen. The Widget Tray appears at the bottom of the Home screen.

Scroll through the widget list by pressing and sliding left or right within the Widget Tray until a desired widget icon appears. Tap the desired widget icon to place the corresponding widget on the Home screen you selected.

You can position a widget icon as needed by pressing and sliding it, and once placed on the Home screen, you can tap a widget to launch its function.

NOTE: You can return a widget to the Widget Tray simply by pressing and dragging the widget over the Widget Tray. Close the Widget Tray by tapping the Widget Tray icon or by pressing the widget icon or the **Back/Clear** key.

Putting the "Fun" in Functions: some call Functions

Lots of commonly used call functions are ready to help you make the most of your Messenger Touch, including fast access to contacts with phone book tabs, three-way calling, speed dialing, one-touch dialing and speakerphone capabilities.

ACCESSING YOUR CONTACTS

To access your contacts, press the **Contacts** soft key. To scroll quickly through your contacts list, press a lettered phone book tab on the left side of the screen and slide your finger up or down the center of the screen to locate contacts alphabetically.

Three-way calling

Call two numbers and connect them to the same call using three-way calling.

In **Standby** mode, tap **Dialer**. The Dialer screen appears in the display. Enter the number for the first party in your call, then press the **Send** key. When connected, ask the other party to remain on the line. Tap **Dialer**, then enter the second party's phone number and press the **Send** key. When the second party answers, resume the conversation.

Speed Dialing

Speed Dialing lets you place a call to any contact stored in your Contacts list by dialing the contact's location number.

To set up a contact for speed dial, select a contact and press the **Options** soft key in the upper right of the screen. Select **Set Speed Dial**, select a **Location Number** for the contact and then press **Yes**.



one-TOUCH dialing

Use one-touch dialing to speed dial contacts from 1 (automatically set up as voicemail) through 9.

In **Standby** mode, tap **Dialer**. The Dialer screen appears in the display. Press and hold the number key corresponding to the desired contact's speed dial number.

IN-CALL SPEAKERPHONE and MUTE CONTROLS

While a call is in progress, drag your finger across the screen to unlock your in-call options. Use the **Mute** sliding button to mute or unmute your microphone. Use the **Speaker** sliding button to turn your speakerphone on or off.